

2



1

PART NUMBER
2455RD-71610949

REVISION HISTORY					
REV	DOCUMENT	DESCRIPTION	CHG'D BY	DATE	APPROVED
A	0111343	INITIAL RELEASE	MKB	2014-06-11	M.K. SENTHIL

SWITCH TYPE: SPST  
 RESET TYPE: MANUAL  
 CONTACT SYSTEM: OPEN ON RISE

1 - TEMPERATURE CHARACTERISTIC  
 OPEN TEMPERATURE: 60°C±5°C  
 CLOSE TEMPERATURE: MANUAL RESET  
 \*MANUAL RESET OPERATION NOT TO BE PERFORMED ABOVE 70% OF THE OPERATING TEMP

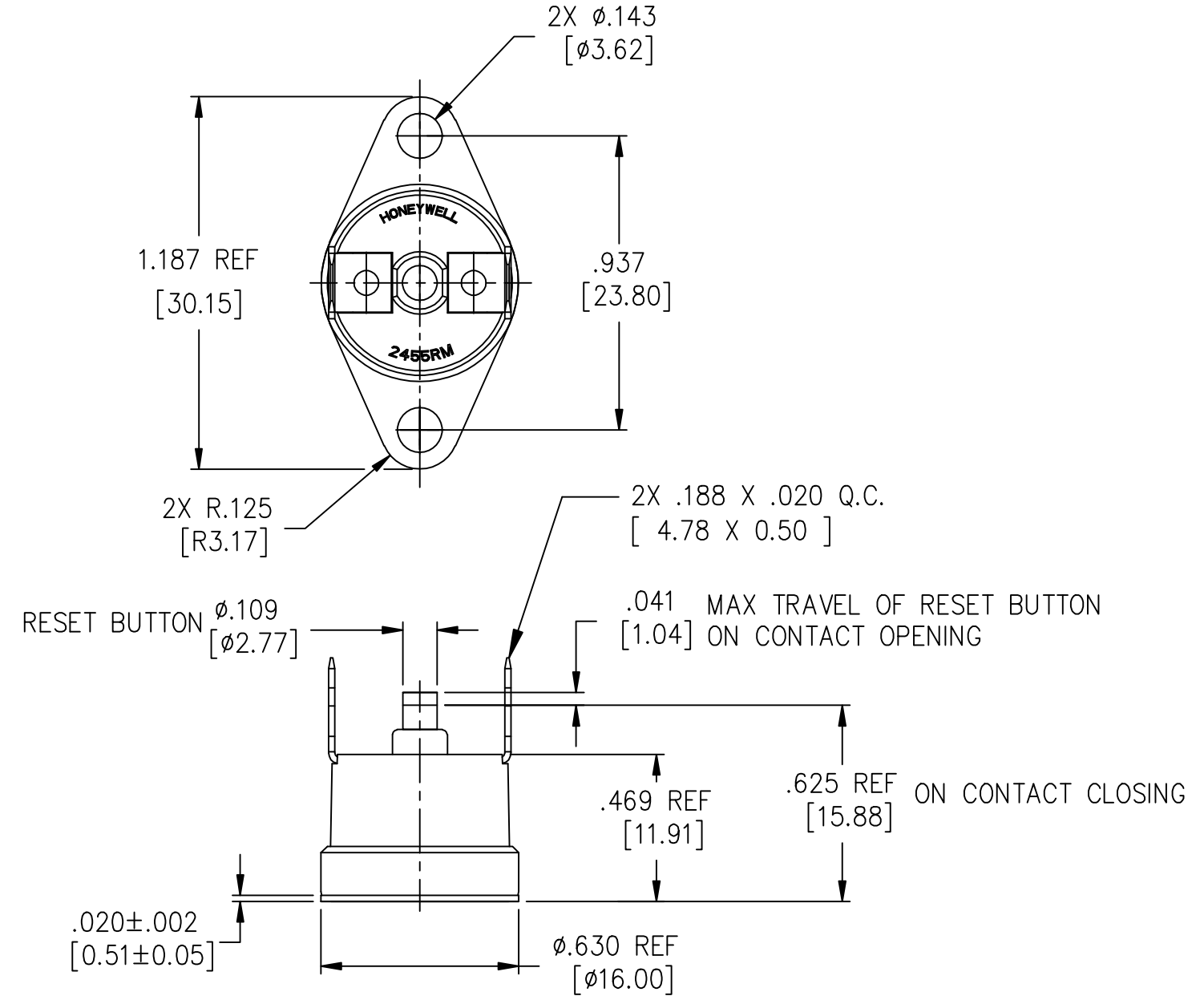
2 - ELECTRICAL RATINGS  
 AMPERAGE: 15 A RESISTIVE AT 6,000 CYCLES (UL);  
 16 A RESISTIVE AT 1000 CYCLES (EU)  
 CONTACT RATINGS  

LIFE CYCLES	120 VAC	240 VAC
6000	15 A RESISTIVE	10 A RESISTIVE

3 - COMPONENT DETAILS  
 CAP: STAINLESS STEEL  
 TERMINAL STYLE: T150  
                                   : BRASS  
 BASE: 2455RD PHENOLIC  
 CONTACTS: SILVER ALLOY  
 BRACKET STYLE: B201A - STAINLESS STEEL

4 - CODING REQUIREMENTS  
 L60C 2455RD 7161 949 NYRWK

5 - WEIGHT: 6 g [0.2 OZ] (DOES NOT INCLUDE BRACKET OR WIRE ASSEMBLY)



UNLESS OTHERWISE SPECIFIED DIMENSIONS ARE IN INCHES  DECIMAL TOL    1 PLACE --- ±.030 2 PLACE --- ±.010 3 PLACE --- ±.005 ANGULAR TOL - ±2' CHAMFER - ±5'	THIRD ANGLE PROJECTION	<b>Honeywell</b>			
		TITLE <b>THERMOSTAT</b>			
MATERIAL  SEE NOTE 3	SIZE B	CAGE CODE -	DWG NO <b>50099493</b>	TYPE I	REV A
FINISH	SCALE NONE	REF WT: SEE NOTE 5	SHEET 1 Of 1		
APPLICABLE DOCUMENTS: ASME Y14.100-2004 ASME Y14.5-2009	RELEASE DATE 2014-06-11	DRW: B. MANJESH 2014-06-11	HONEYWELL CONFIDENTIAL THIS DOCUMENT CONTAINS PROPRIETARY INFORMATION AND SUCH INFORMATION MAY NOT BE DISCLOSED TO OTHERS FOR ANY PURPOSE, NOR USED FOR MANUFACTURING PURPOSE'S WITHOUT WRITTEN PERMISSION FROM HONEYWELL		
COMPUTER GENERATED DRAWING: AutoCAD	RDE: M.K. SENTHIL 2014-06-11	QA: LI. SOFIA 2014-06-11			
	CHK: S. RAGHU 2014-06-11				

2



1